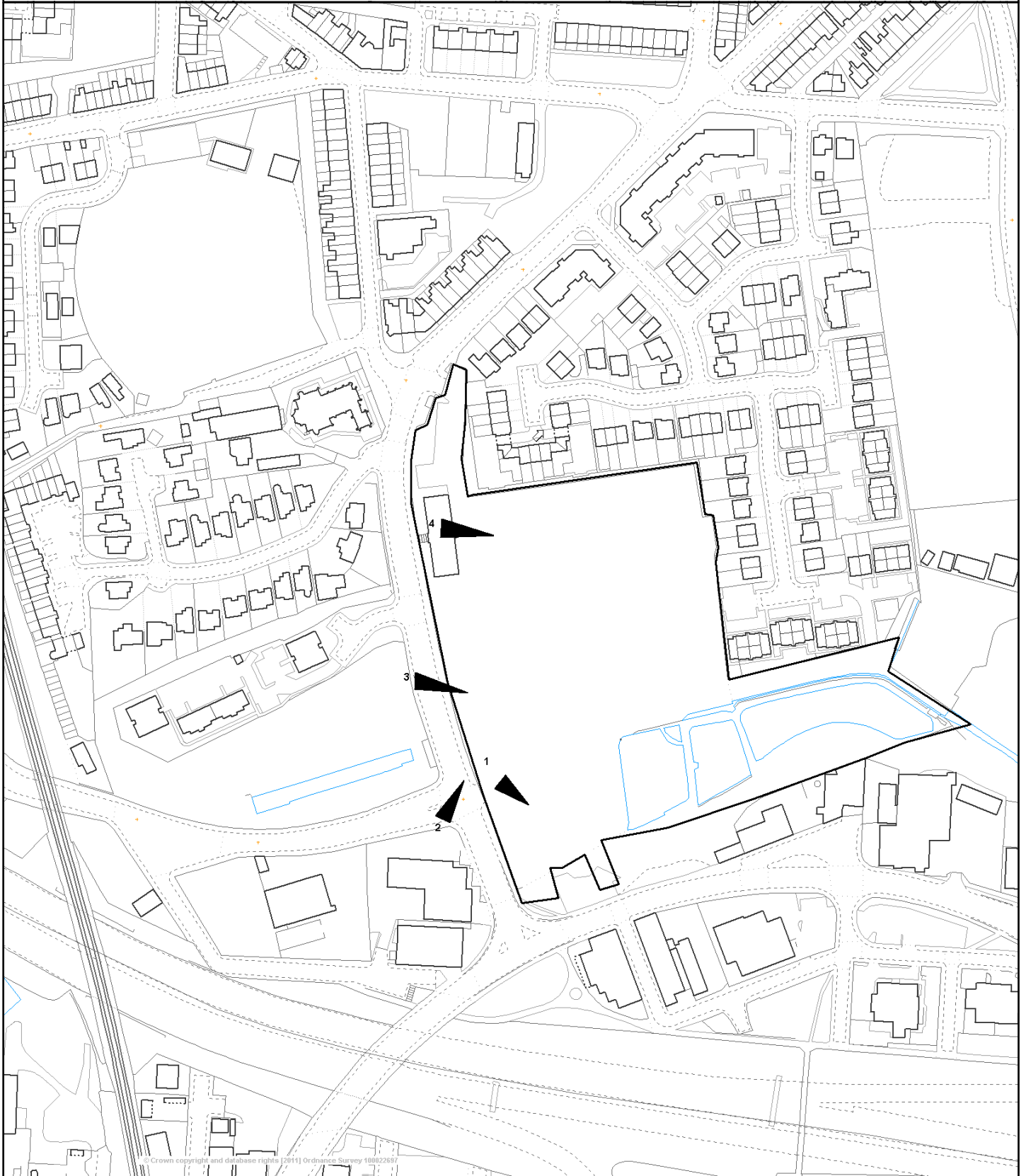


Planning Application 16/00897/FUL

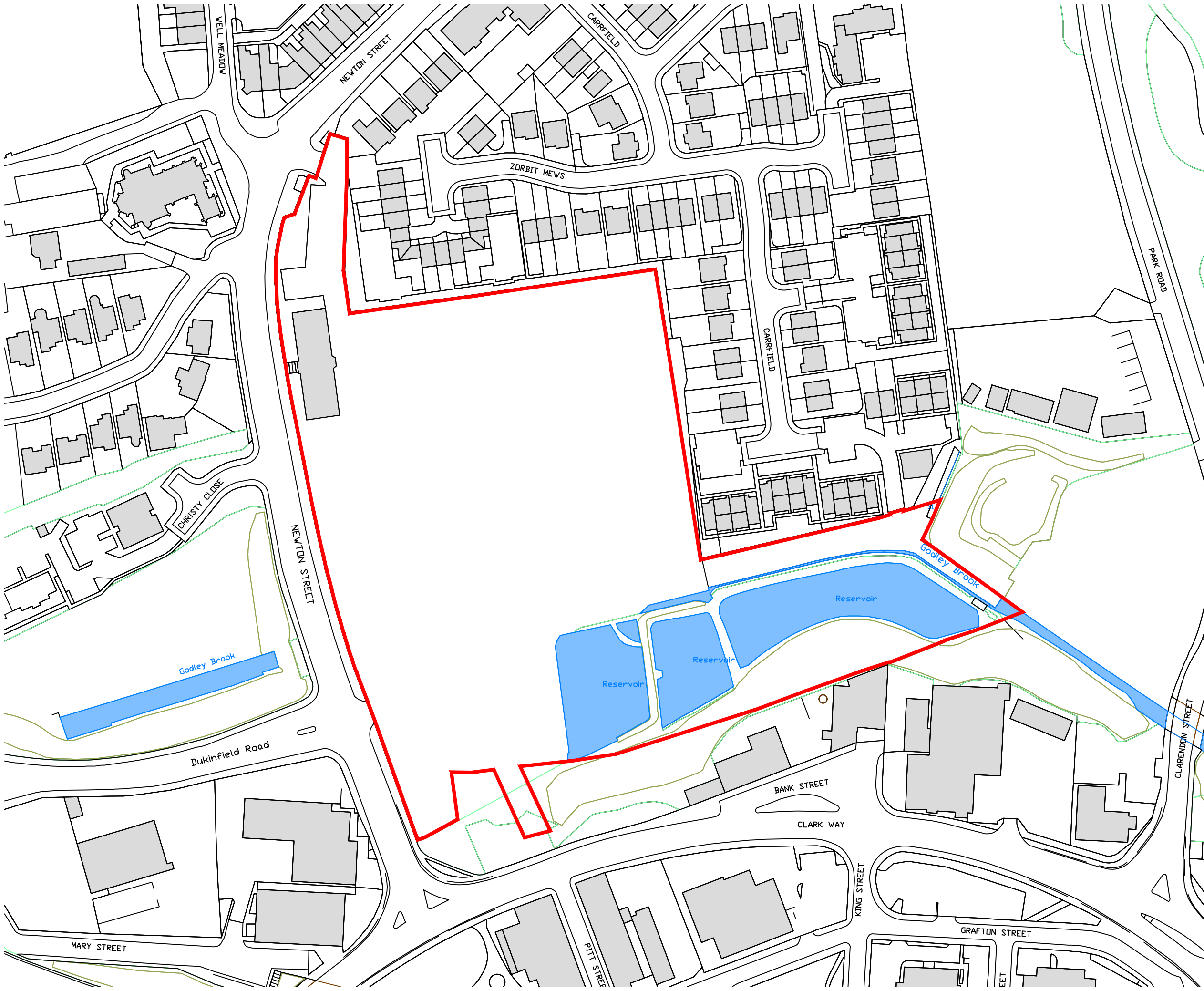


© Crown copyright and database rights (2011) Ordnance Survey 100022681

This map is reproduced from Ordnance Survey material with the permission of Ordnance Survey on behalf of the Controller of Her Majesty's Stationary Office (c) Crown copyright. Unauthorised reproduction infringes Crown copyright and may lead to prosecution or civil proceedings.

Scale 1/2500 Date 12/6/2017

Centre = 394594 E 395419 N




Notes:

- This drawing is copyright.
- Do not scale dimensions from this drawing.
- This drawing is to be read in conjunction with all other relevant drawings.
- All discrepancies on this drawing are to be reported to the architect.
- Do not modify any element of this drawing.
- Use drawing only for purpose(s) issued.

North Sign / Key Plan

The following external model files are included within this drawing:

- 6821_MD_SP(90)01

0mm				60mm
A	14/07/16	Eastern boundary edge straighten to align with title plan	TW	GP
Rev	Date	Revision Notes	Dn	Rv
Client / Contractor				
 Intelligence Buildings Infrastructure www.ibigroup.com				
Project Carrfield Mill, Hyde				
Drawing Title Application Boundary Plan				
Job Number 6821	Drawing Originated Date 05/07/2016	PAS 1192 Status Code -		
Scale@A3 1:1250	Purpose PRELIMINARY			
Drawing Number 6821_SP(90)01				Revision A

Application Number: 16/00897/OUT

Photo 1



Photo 2

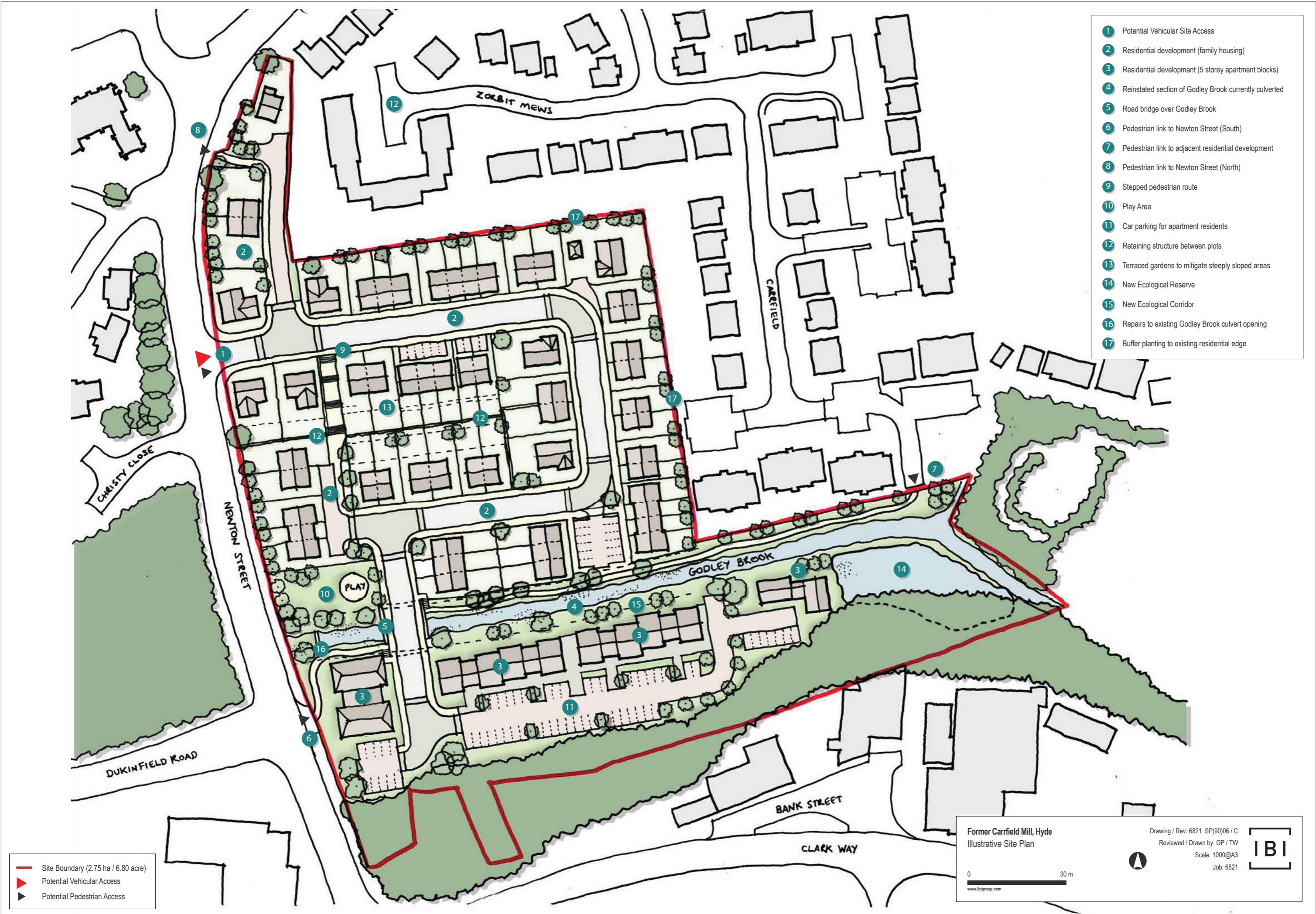


Photo 3



Photo 4





- 1 Potential Vehicular Site Access
- 2 Residential development (family housing)
- 3 Residential development (5 storey apartment blocks)
- 4 Reinstated section of Godley Brook currently culverted
- 5 Road bridge over Godley Brook
- 6 Pedestrian link to Newton Street (South)
- 7 Pedestrian link to adjacent residential development
- 8 Pedestrian link to Newton Street (North)
- 9 Stepped pedestrian route
- 10 Play Area
- 11 Car parking for apartment residents
- 12 Retaining structure between plots
- 13 Terraced gardens to mitigate steeply sloped areas
- 14 New Ecological Reserve
- 15 New Ecological Corridor
- 16 Repairs to existing Godley Brook culvert opening
- 17 Buffer planting to existing residential edge

- Site Boundary (2.75 ha / 6.80 acre)
- ▶ Potential Vehicular Access
- ▶ Potential Pedestrian Access

Former Carrfield Mill, Hyde
 Illustrative Site Plan

Drawing / Rev: 6821_SP(90)06 / C
 Reviewed / Drawn by: GP / TW
 Scale: 1000@A3
 Job: 6821

0 ————— 30 m
 www.ibigroup.com

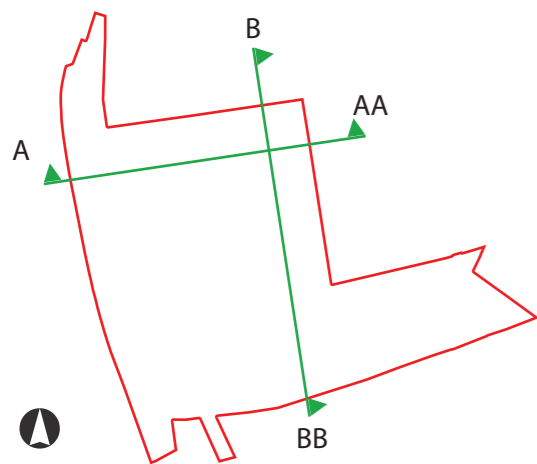
IBI



Section A-AA



Section B-BB



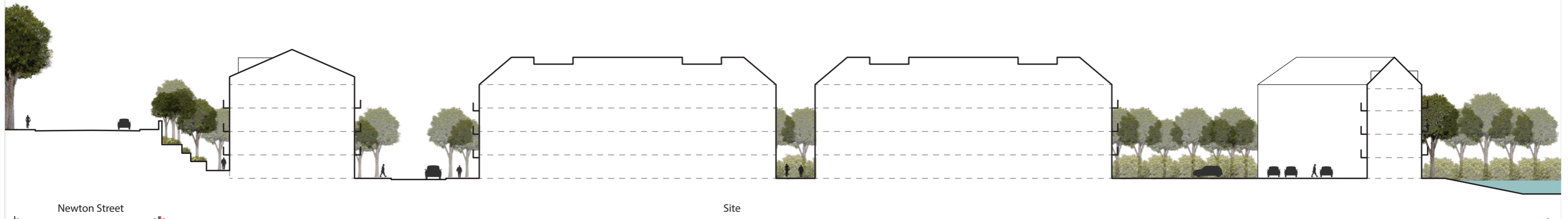
Former Carrfield Mill, Hyde
 Illustrative Site Sections A & B

Drawing / Rev: 6821_SE(90)01 / -
 Reviewed / Drawn by: GP / TW
 Scale: 1:500@A3
 Job: 6821

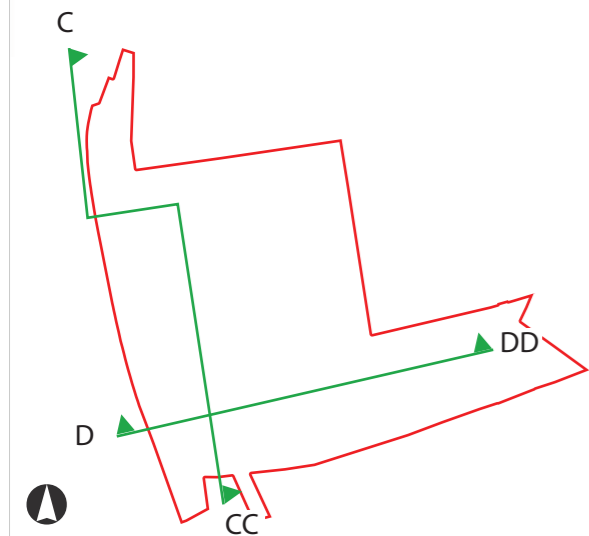
0 40 m
 www.ibigroup.com



Section C-CC



Section D-DD



Former Carrfield Mill, Hyde
 Illustrative Site Sections C & D

Drawing / Rev: 6821_SE(90)02 / -
 Reviewed / Drawn by: GP / TW
 Scale: 1:500@A3
 Job: 6821

www.ibigroup.com

0 40 m

IBI